



say
O

Pricelist 2022-2
English
Euro ex. VAT.
Ab factory

Say O ApS

Mileparken 22, opgang A
2740 Skovlunde
Denmark

Phone: +45 42 32 32 32

Info@sayo.dk

Contents

General information	Page 3
---------------------	--------

Collection	Say O Chair	Page 5
	Say O Sledge Chair	Page 6
	Say O Minilux Chair	Page 7
	Say O Wood Chair	Page 8
	Say O Metal Stool, Low	Page 9
	Say O Metal Stool, Medium	Page 10
	Say O Metal Stool, High	Page 11
	Say O Wood Stool, Low	Page 12
	Say O Wood Stool, Medium	Page 13
	Say O Wood Stool, High	Page 14
	Say O Metal Lounge	Page 15
	Say O Wood Lounge	Page 16
	Say O Bench System	Page 17

Fabric, leather and materials	Fabric collection	Page 18
	Leather collection	Page 25
	Plastic collection	Page 30
	Wood collection	Page 28

General information:

The pricelist is valid from September 2022

Reservation is made for typing error and price changes in materials and leather prices.

Please be aware of printet colors in this pricelist can deviate from original.



Say O Chair

Type Shell chair with or without seat pad upholstery, 4 leg frame, stackable without wagon, 6 pcs.

Variation With or without seat pad upholstery.

Shell 3D Veneer shell. Made in standard:

- Beech veneer, knife cut, black- or white stained
- Ash veneer, knife cut, mat natural lacquered
- Ash veneer, knife cut, black- or white painted
- Oak veneer, knife cut, mat natural lacquered.
- Walnut veneer, knife cut, mat natural lacquered
- Other finiture, minimum 50 chairs

PP recycle friendly poly shell in 9 colors - see colors at page 30

Frame 4 leg metal frame. Made in standard:

- Chrome
- Black structure lacquer, NCS S 9000 S
- White structure lacquer, NCS S 0500 S
- Other finiture, minimum 50 chairs

Upholstery Seat pad upholstery in formed plywood, cold foam, replaceable.

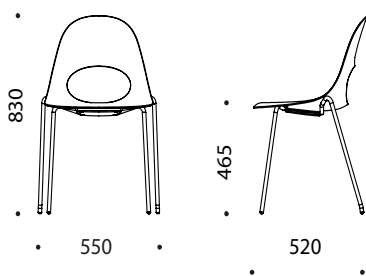
Wood Shell:

Model in beech veneer, mat natural lacquered shell, frame in chrome, black or white lacquer	Euro	407,00
Model in beech veneer, black or white stained shell, frame in chrome, black or white lacquer	Euro	460,00
Model in ash veneer, mat n natural lacquered shell, frame in chrome, black or white lacquer	Euro	465,00
Model in ash veneer, black or white painted shell, frame in chrome, black or white lacquer	Euro	515,00
Model in oak, mat natural lacquered shell, s frame in chrome, black or white lacquer	Euro	465,00
Model in walnut, mat natural lacquered shell, frame in chrome, black or white lacquer	Euro	480,00

Poly shell:

Model in recycle friendly poly (PP+40%GF) - please see the color sheme at page 30	Euro	195,00
---	------	--------

Extra: Seat pad upholstery		
Client fabric, 40 cm. per seat	Euro	85,00
Fabric price group 1	Euro	105,00
Fabric price group 2	Euro	115,00
Fabric price group 3	Euro	135,00
Fabric price group 4	Euro	142,00
Leather price group 1	Euro	133,00
Leather price group 2	Euro	145,00
Leather price group 3	Euro	158,00
Leather price group 4	Euro	178,00
Leather price group 5	Euro	205,00
Leather price group 6	Euro	242,00
Felt gliders	Euro	11,00



Say O Sledge Chair

Type Shell chair with or without seat pad upholstery, sledge frame, stackable without wagon, 12 pcs.

Variation With or without seat pad upholstery.

Shell 3D Veneer shell. Made in standard:

- Beech veneer, knife cut, black- or white stained
- Ash veneer, knife cut, mat natural lacquered
- Ash veneer, knife cut, black- or white painted
- Oak veneer, knife cut, mat natural lacquered.
- Walnut veneer, knife cut, mat natural lacquered
- Other finiture, minimum 50 chairs

PP recycle friendly poly shell in 9 colors - see colors at page 30

Frame 4 leg metal frame. Made in standard:

- Chrome
- Black structure lacquer, NCS S 9000 S
- White structure lacquer, NCS S 0500 S
- Other finiture, minimum 50 chairs

Upholstery Seat pad upholstery in formed plywood, cold foam, replaceable.

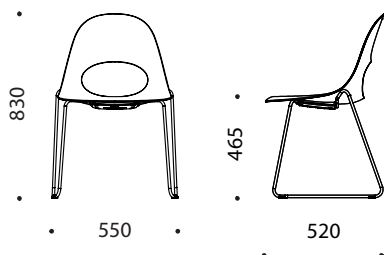
Wood Shell:

Model in beech veneer, mat natural lacquered shell, frame in chrome, black or white lacquer	Euro	407,00
Model in beech veneer, black or white stained shell, frame in chrome, black or white lacquer	Euro	460,00
Model in ash veneer, mat n natural lacquered shell, frame in chrome, black or white lacquer	Euro	465,00
Model in ash veneer, black or white painted shell, frame in chrome, black or white lacquer	Euro	515,00
Model in oak, mat natural lacquered shell, s frame in chrome, black or white lacquer	Euro	465,00
Model in walnut, mat natural lacquered shell, frame in chrome, black or white lacquer	Euro	480,00

Poly shell:

Model in recycle friendly poly (PP+40%GF) - please see the color sheme at page 30	Euro	195,00
---	------	--------

Extra: Seat pad upholstery		
Client fabric, 40 cm. per seat	Euro	85,00
Fabric price group 1	Euro	105,00
Fabric price group 2	Euro	115,00
Fabric price group 3	Euro	135,00
Fabric price group 4	Euro	142,00
Leather price group 1	Euro	133,00
Leather price group 2	Euro	145,00
Leather price group 3	Euro	158,00
Leather price group 4	Euro	178,00
Leather price group 5	Euro	205,00
Leather price group 6	Euro	242,00
Felt gliders	Euro	11,00



Say O Minilux Chair

Type Shell chair with or without seat pad upholstery, sledge frame, not stackable.

Variation With or without seat pad upholstery.

Shell 3D Veneer shell. Made in standard:

- Beech veneer, knife cut, black- or white stained
- Ash veneer, knife cut, mat natural lacquered
- Ash veneer, knife cut, black- or white painted
- Oak veneer, knife cut, mat natural lacquered.
- Walnut veneer, knife cut, mat natural lacquered
- Other finiture, minimum 50 chairs

PP recycle friendly poly shell in 9 colors - see colors at page 30

Frame 4 leg metal frame. Made in standard:

- Chrome
- Black structure lacquer, NCS S 9000 S
- White structure lacquer, NCS S 0500 S
- Other finiture, minimum 50 chairs

Upholstery Seat pad upholstery in formed plywood, cold foam, replaceable.

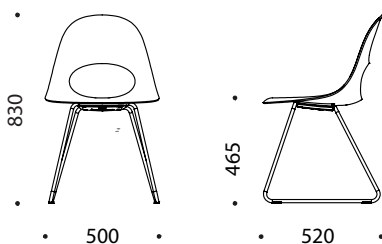
Wood Shell:

Model in beech veneer, mat natural lacquered shell, frame in chrome, black or white lacquer	Euro	448,00
Model in beech veneer, black or white stained shell, frame in chrome, black or white lacquer	Euro	495,00
Model in ash veneer, mat n natural lacquered shell, frame in chrome, black or white lacquer	Euro	502,00
Model in ash veneer, black or white painted shell, frame in chrome, black or white lacquer	Euro	550,00
Model in oak, mat natural lacquered shell, s frame in chrome, black or white lacquer	Euro	502,00
Model in walnut, mat natural lacquered shell, frame in chrome, black or white lacquer	Euro	517,00

Poly shell:

Model in recycle friendly poly (PP+40%GF) - please see the color sheme at page 30	Euro	231,00
---	------	--------

Extra:	Seat pad upholstery		
	Client fabric, 40 cm. per seat	Euro	85,00
	Fabric price group 1	Euro	105,00
	Fabric price group 2	Euro	115,00
	Fabric price group 3	Euro	135,00
	Fabric price group 4	Euro	142,00
	Leather price group 1	Euro	133,00
	Leather price group 2	Euro	145,00
	Leather price group 3	Euro	158,00
	Leather price group 4	Euro	178,00
	Leather price group 5	Euro	205,00
	Leather price group 6	Euro	242,00
	Felt gliders	Euro	11,00



Say O Wood Chair

Type Shell chair with or without seat pad upholstery, 4 leg wooden frame, not stackable.

Variation With or without seat pad upholstery.

Frame 4 leg wooden frame. Made in standard:
 • Oak natural lacquer
 • Other finiture, minimum 50 chairs

Shell 3D Veneer shell. Made in standard:
 • Beech veneer, knife cut, black- or white stained
 • Ash veneer, knife cut, mat natural lacquered
 • Ash veneer, knife cut, black- or white painted
 • Oak veneer, knife cut, mat natural lacquered.
 • Walnut veneer, knife cut, mat natural lacquered
 • Other finiture, minimum 50 chairs
 PP recycle friendly poly shell in 9 colors - see colors at page 30

Frame 4 leg wooden frame. Made in standard:
 • Oak natural lacquer
 • Other finiture, minimum 50 chairs

Upholstery Seat pad upholstery in formed plywood, cold foam, replaceable.

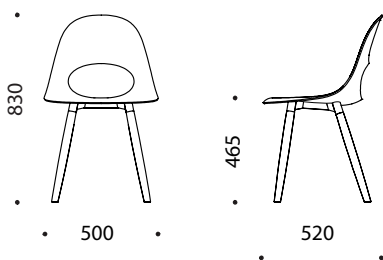
Wood shell:

Model in beech veneer, mat natural lacquered shell, frame in solid oak, natural mat lacquer	Euro	469,00
Model in beech veneer, black or white stained shell, frame in solid oak, natural mat lacquer	Euro	512,00
Model in ash veneer, mat n natural lacquered shell, frame in solid oak, natural mat lacquer	Euro	561,00
Model in ash veneer, black or white painted shell, frame in solid oak, natural mat lacquer	Euro	594,00
Model in oak, mat natural lacquered shell, frame in solid oak, natural mat lacquer	Euro	561,00
Model in walnut, mat natural lacquered shell, frame in solid oak, natural mat lacquer	Euro	583,00

Poly shell:

Model in recycle friendly poly (PA6+15%GF) - please see the color sheme at page 30	Euro	242,00
--	------	--------

Extra:	Seat pad upholstery		
	Client fabric, 40 cm. per seat	Euro	85,00
	Fabric price group 1	Euro	105,00
	Fabric price group 2	Euro	115,00
	Fabric price group 3	Euro	135,00
	Fabric price group 4	Euro	142,00
	Leather price group 1	Euro	133,00
	Leather price group 2	Euro	145,00
	Leather price group 3	Euro	158,00
	Leather price group 4	Euro	178,00
	Leather price group 5	Euro	205,00
	Leather price group 6	Euro	242,00
	Felt gliders	Euro	11,00



Say O Metal Stool, Low

Type Shell chair with or without seat pad upholstery, sledge frame, not stackable.

Variation With or without seat pad upholstery.

Shell 3D Veneer shell. Made in standard:

- Beech veneer, knife cut, black- or white stained
- Ash veneer, knife cut, mat natural lacquered
- Ash veneer, knife cut, black- or white painted
- Oak veneer, knife cut, mat natural lacquered.
- Walnut veneer, knife cut, mat natural lacquered
- Other finiture, minimum 50 chairs

PP recycle friendly poly shell in 9 colors - see colors at page 20

Frame 4 leg metal frame. Made in standard:

- Chrome
- Black structure lacquer, NCS S 9000 S
- White structure lacquer, NCS S 0500 S
- Other finiture, minimum 50 chairs

Upholstery Seat pad upholstery in formed plywood, cold foam, replaceable.

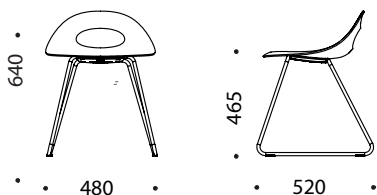
Wood Shell:

Model in beech veneer, mat natural lacquered shell, frame in chrome, black or white lacquer	Euro	366,00
Model in beech veneer, black or white stained shell, frame in chrome, black or white lacquer	Euro	388,00
Model in ash veneer, mat n natural lacquered shell, frame in chrome, black or white lacquer	Euro	410,00
Model in ash veneer, black or white painted shell, frame in chrome, black or white lacquer	Euro	447,00
Model in oak, mat natural lacquered shell, s frame in chrome, black or white lacquer	Euro	410,00
Model in walnut, mat natural lacquered shell, frame in chrome, black or white lacquer	Euro	433,00

Polyshell:

Model in recycle friendly poly (PP+40%GF) - please see the color sheme at page 30	Euro	231,00
---	------	--------

Extra: Seat pad upholstery		
Client fabric, 40 cm. per seat	Euro	85,00
Fabric price group 1	Euro	105,00
Fabric price group 2	Euro	115,00
Fabric price group 3	Euro	135,00
Fabric price group 4	Euro	142,00
Leather price group 1	Euro	133,00
Leather price group 2	Euro	145,00
Leather price group 3	Euro	158,00
Leather price group 4	Euro	178,00
Leather price group 5	Euro	205,00
Leather price group 6	Euro	242,00
Felt gliders	Euro	11,00



Say O Metal Stool, Medium

Type Shell chair with or without seat pad upholstery, sledge frame, not stackable.

Variation With or without seat pad upholstery.

Shell 3D Veneer shell. Made in standard:

- Beech veneer, knife cut, black- or white stained
- Ash veneer, knife cut, mat natural lacquered
- Ash veneer, knife cut, black- or white painted
- Oak veneer, knife cut, mat natural lacquered.
- Walnut veneer, knife cut, mat natural lacquered
- Other finiture, minimum 50 chairs

PP recycle friendly poly shell in 9 colors - see colors at page 30

Frame 4 leg metal frame. Made in standard:

- Chrome
- Black structure lacquer, NCS S 9000 S
- White structure lacquer, NCS S 0500 S
- Other finiture, minimum 50 chairs

Upholstery Seat pad upholstery in formed plywood, cold foam, replaceable.

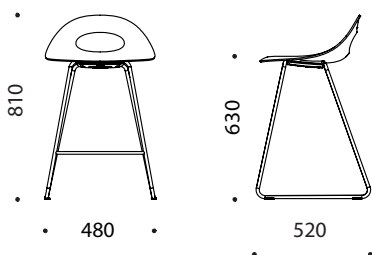
Wood Shell:

Model in beech veneer, mat natural lacquered shell, frame in chrome, black or white lacquer	Euro	403,00
Model in beech veneer, black or white stained shell, frame in chrome, black or white lacquer	Euro	458,00
Model in ash veneer, mat n natural lacquered shell, frame in chrome, black or white lacquer	Euro	513,00
Model in ash veneer, black or white painted shell, frame in chrome, black or white lacquer	Euro	545,00
Model in oak, mat natural lacquered shell, s frame in chrome, black or white lacquer	Euro	513,00
Model in walnut, mat natural lacquered shell, frame in chrome, black or white lacquer	Euro	535,00

Poly shell:

Model in recycle friendly poly (PA6+15%GF) - please see the color sheme at page 30	Euro	264,00
--	------	--------

Extra: Seat pad upholstery		
Client fabric, 40 cm. per seat	Euro	85,00
Fabric price group 1	Euro	105,00
Fabric price group 2	Euro	115,00
Fabric price group 3	Euro	135,00
Fabric price group 4	Euro	142,00
Leather price group 1	Euro	133,00
Leather price group 2	Euro	145,00
Leather price group 3	Euro	158,00
Leather price group 4	Euro	178,00
Leather price group 5	Euro	205,00
Leather price group 6	Euro	242,00
Felt gliders	Euro	11,00



Say O Metal Stool, High

Type Shell chair with or without seat pad upholstery, sledge frame, not stackable.

Variation With or without seat pad upholstery.

Shell 3D Veneer shell. Made in standard:

- Beech veneer, knife cut, black- or white stained
- Ash veneer, knife cut, mat natural lacquered
- Ash veneer, knife cut, black- or white painted
- Oak veneer, knife cut, mat natural lacquered.
- Walnut veneer, knife cut, mat natural lacquered
- Other finiture, minimum 50 chairs

PP recycle friendly poly shell in 9 color - see color at page 30

Frame 4 leg metal frame. Made in standard:

- Chrome
- Black structure lacquer, NCS S 9000 S
- White structure lacquer, NCS S 0500 S
- Other finiture, minimum 50 chairs

Upholstery Seat pad upholstery in formed plywood, cold foam, replaceable.

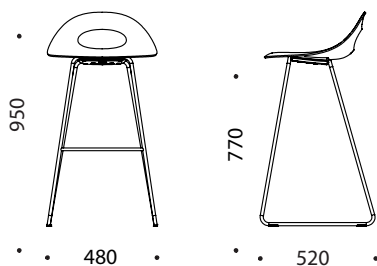
Wood Shell:

Model in beech veneer, mat natural lacquered shell, frame in chrome, black or white lacquer	Euro	429,00
Model in beech veneer, black or white stained shell, frame in chrome, black or white lacquer	Euro	484,00
Model in ash veneer, mat n natural lacquered shell, frame in chrome, black or white lacquer	Euro	539,00
Model in ash veneer, black or white painted shell, frame in chrome, black or white lacquer	Euro	572,00
Model in oak, mat natural lacquered shell, s frame in chrome, black or white lacquer	Euro	439,00
Model in walnut, mat natural lacquered shell, frame in chrome, black or white lacquer	Euro	561,00

Poly shell:

Model in recycle friendly poly (PP+40%GF) - please see the color sheme at page 30	Euro	286,00
---	------	--------

Extra: Seat pad upholstery		
Client fabric, 40 cm. per seat	Euro	85,00
Fabric price group 1	Euro	105,00
Fabric price group 2	Euro	115,00
Fabric price group 3	Euro	135,00
Fabric price group 4	Euro	142,00
Leather price group 1	Euro	133,00
Leather price group 2	Euro	145,00
Leather price group 3	Euro	158,00
Leather price group 4	Euro	178,00
Leather price group 5	Euro	205,00
Leather price group 6	Euro	242,00
Felt gliders	Euro	11,00



Say O Wood Stool, Low

Type Shell chair with or without seat pad upholstery, 4 leg wooden frame, not stackable.

Variation With or without seat pad upholstery.

Frame 4 leg wooden frame. Made in standard:

- Oak natural lacquer
- Other finiture, minimum 50 chairs

Shell 3D Veneer shell. Made in standard:

- Beech veneer, knife cut, black- or white stained
- Ash veneer, knife cut, mat natural lacquered
- Ash veneer, knife cut, black- or white painted
- Oak veneer, knife cut, mat natural lacquered.
- Walnut veneer, knife cut, mat natural lacquered
- Other finiture, minimum 50 chairs

PP recycle friendly poly shell in 9 colors - see colors at page 30

Frame 4 leg wooden frame. Made in standard:

- Oak natural lacquer
- Other finiture, minimum 50 chairs

Upholstery Seat pad upholstery in formed plywood, cold foam, replaceable.

Wood shell:

Model in beech veneer, mat natural lacquered shell, frame in solid oak, natural mat lacquer	Euro	446,00
Model in beech veneer, black or white stained shell, frame in solid oak, natural mat lacquer	Euro	495,00
Model in ash veneer, mat n natural lacquered shell, frame in solid oak, natural mat lacquer	Euro	510,00
Model in ash veneer, black or white painted shell, frame in solid oak, natural mat lacquer	Euro	543,00
Model in oak, mat natural lacquered shell, frame in solid oak, natural mat lacquer	Euro	510,00
Model in walnut, mat natural lacquered shell, frame in solid oak, natural mat lacquer	Euro	532,00

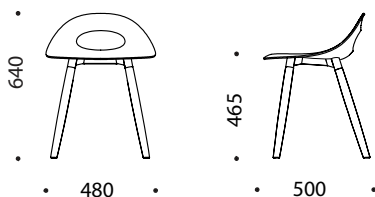
Poly shell:

Model in recycle friendly poly (PP+40%GF) - please see the color sheme at page 30	Euro	242,00
---	------	--------

Extra: Seat pad upholstery

Client fabric, 40 cm. per seat	Euro	85,00
Fabric price group 1	Euro	105,00
Fabric price group 2	Euro	115,00
Fabric price group 3	Euro	135,00
Fabric price group 4	Euro	142,00
Leather price group 1	Euro	133,00
Leather price group 2	Euro	145,00
Leather price group 3	Euro	158,00
Leather price group 4	Euro	178,00
Leather price group 5	Euro	205,00
Leather price group 6	Euro	242,00

Felt gliders	Euro	11,00
--------------	------	-------



Say O Wood Stool, Medium

Type Shell chair with or without seat pad upholstery, 4 leg wooden frame, not stackable.

Variation With or without seat pad upholstery.

Frame 4 leg wooden frame. Made in standard:
 • Oak natural lacquer
 • Other finiture, minimum 50 chairs

Shell 3D Veneer shell. Made in standard:
 • Beech veneer, knife cut, black- or white stained
 • Ash veneer, knife cut, mat natural lacquered
 • Ash veneer, knife cut, black- or white painted
 • Oak veneer, knife cut, mat natural lacquered.
 • Walnut veneer, knife cut, mat natural lacquered
 • Other finiture, minimum 50 chairs
 PP recycle friendly poly shell in 9 colors - see colors at page 30

Frame 4 leg wooden frame. Made in standard:
 • Oak natural lacquer
 • Other finiture, minimum 50 chairs

Upholstery Seat pad upholstery in formed plywood, cold foam, replaceable.

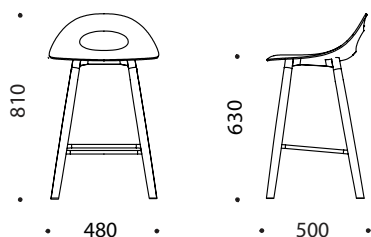
Wood shell:

Model in beech veneer, mat natural lacquered shell, frame in solid oak, natural mat lacquer	Euro	495,00
Model in beech veneer, black or white stained shell, frame in solid oak, natural mat lacquer	Euro	517,00
Model in ash veneer, mat n natural lacquered shell, frame in solid oak, natural mat lacquer	Euro	539,00
Model in ash veneer, black or white painted shell, frame in solid oak, natural mat lacquer	Euro	572,00
Model in oak, mat natural lacquered shell, frame in solid oak, natural mat lacquer	Euro	539,00
Model in walnut, mat natural lacquered shell, frame in solid oak, natural mat lacquer	Euro	561,00

Poly shell:

Model in recycle friendly poly (PP+40%GF) - please see the color sheme at page 30	Euro	297,00
---	------	--------

Extra:	Seat pad upholstery		
	Client fabric, 40 cm. per seat	Euro	85,00
	Fabric price group 1	Euro	105,00
	Fabric price group 2	Euro	115,00
	Fabric price group 3	Euro	135,00
	Fabric price group 4	Euro	142,00
	Leather price group 1	Euro	133,00
	Leather price group 2	Euro	145,00
	Leather price group 3	Euro	158,00
	Leather price group 4	Euro	178,00
	Leather price group 5	Euro	205,00
	Leather price group 6	Euro	242,00
	Felt gliders	Euro	11,00



Say O Wood Stool, High

Type Shell chair with or without seat pad upholstery, 4 leg wooden frame, not stackable.

Variation With or without seat pad upholstery.

Frame 4 leg wooden frame. Made in standard:
 • Oak natural lacquer
 • Other finiture, minimum 50 chairs

Shell 3D Veneer shell. Made in standard:
 • Beech veneer, knife cut, black- or white stained
 • Ash veneer, knife cut, mat natural lacquered
 • Ash veneer, knife cut, black- or white painted
 • Oak veneer, knife cut, mat natural lacquered.
 • Walnut veneer, knife cut, mat natural lacquered
 • Other finiture, minimum 50 chairs
 PP recycle friendly poly shell in 9 colors - see colors at page 30

Frame 4 leg wooden frame. Made in standard:
 • Oak natural lacquer
 • Other finiture, minimum 50 chairs

Upholstery Seat pad upholstery in formed plywood, cold foam, replaceable.

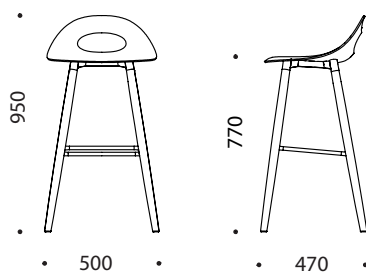
Wood shell:

Model in beech veneer, mat natural lacquered shell, frame in solid oak, natural mat lacquer	Euro	532,00
Model in beech veneer, black or white stained shell, frame in solid oak, natural mat lacquer	Euro	554,00
Model in ash veneer, mat n natural lacquered shell, frame in solid oak, natural mat lacquer	Euro	575,00
Model in ash veneer, black or white painted shell, frame in solid oak, natural mat lacquer	Euro	608,00
Model in oak, mat natural lacquered shell, frame in solid oak, natural mat lacquer	Euro	575,00
Model in walnut, mat natural lacquered shell, frame in solid oak, natural mat lacquer	Euro	598,00

Poly shell:

Model in recycle friendly poly (PP+40%GF) - please see the color sheme at page 30	Euro	336,00
---	------	--------

Extra:	Seat pad upholstery		
	Client fabric, 40 cm. per seat	Euro	85,00
	Fabric price group 1	Euro	105,00
	Fabric price group 2	Euro	115,00
	Fabric price group 3	Euro	135,00
	Fabric price group 4	Euro	142,00
	Leather price group 1	Euro	133,00
	Leather price group 2	Euro	145,00
	Leather price group 3	Euro	158,00
	Leather price group 4	Euro	178,00
	Leather price group 5	Euro	205,00
	Leather price group 6	Euro	242,00
	Felt gliders	Euro	11,00



Say O Metal Lounge

Type Veneer shell lounge chair with or without seat pad upholstery, sledge frame, not stackable.

Variation With or without seat pad upholstery.

Shell 3D Veneer shell. Made in standard:

- Beech veneer, knife cut, black- or white stained
- Ash veneer, knife cut, mat natural lacquered
- Ash veneer, knife cut, black- or white painted
- Oak veneer, knife cut, mat natural lacquered.
- Walnut veneer, knife cut, mat natural lacquered
- Other finiture, minimum 50 chairs

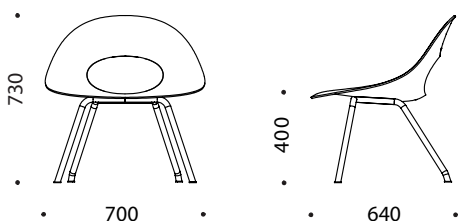
Frame 4 leg metal frame. Made in standard:

- Chrome
- Black structure lacquer, NCS S 9000 S
- White structure lacquer, NCS S 0500 S
- Other finiture, minimum 50 chairs

Upholstery Seat pad upholstery in formed plywood, cold foam, replaceable.

Model in beech veneer, mat natural lacquered shell, frame in chrome, black or white lacquer	Euro	583,00
Model in beech veneer, black or white stained shell, frame in chrome, black or white lacquer	Euro	627,00
Model in ash veneer, mat n natural lacquered shell, frame in chrome, black or white lacquer	Euro	671,00
Model in ash veneer, black or white painted shell, frame in chrome, black or white lacquer	Euro	715,00
Model in oak, mat natural lacquered shell, s frame in chrome, black or white lacquer	Euro	671,00
Model in walnut, mat natural lacquered shell, frame in chrome, black or white lacquer	Euro	770,00

Extra:	Seat pad upholstery	
	Client fabric, 40 cm. per seat	Euro 99,00
	Fabric price group 1	Euro 111,00
	Fabric price group 2	Euro 123,00
	Fabric price group 3	Euro 142,00
	Fabric price group 4	Euro 149,00
	Leather price group 1	Euro 141,00
	Leather price group 2	Euro 152,00
	Leather price group 3	Euro 164,00
	Leather price group 4	Euro 185,00
	Leather price group 5	Euro 212,00
	Leather price group 6	Euro 248,00



Say O Wood Lounge

Type Veneer shell lounge chair with or without seat pad upholstery, 4 leg wooden frame, not stackable.

Variation With or without seat pad upholstery.

Frame 4 leg wooden frame. Made in standard:
 • Oak natural lacquer
 • Other finiture, minimum 50 chairs

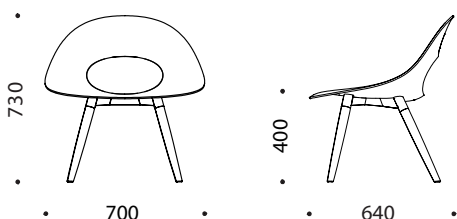
Shell 3D Veneer shell. Made in standard:
 • Beech veneer, knife cut, black- or white stained
 • Ash veneer, knife cut, mat natural lacquered
 • Ash veneer, knife cut, black- or white painted
 • Oak veneer, knife cut, mat natural lacquered.
 • Walnut veneer, knife cut, mat natural lacquered
 • Other finiture, minimum 50 chairs

Frame 4 leg wooden frame. Made in standard:
 • Oak natural lacquer
 • Other finiture, minimum 50 chairs

Upholstery Seat pad upholstery in formed plywood, cold foam, replaceable.

Model in beech veneer, mat natural lacquered shell, frame in solid oak, natural mat lacquer	Euro	638,00
Model in beech veneer, black or white stained shell, frame in solid oak, natural mat lacquer	Euro	682,00
Model in ash veneer, mat n natural lacquered shell, frame in solid oak, natural mat lacquer	Euro	726,00
Model in ash veneer, black or white painted shell, frame in solid oak, natural mat lacquer	Euro	770,00
Model in oak, mat natural lacquered shell, frame in solid oak, natural mat lacquer	Euro	726,00
Model in walnut, mat natural lacquered shell, frame in solid oak, natural mat lacquer	Euro	825,00

Extra:	Seat pad upholstery		
	Client fabric, 40 cm. per seat	Euro	99,00
	Fabric price group 1	Euro	111,00
	Fabric price group 2	Euro	123,00
	Fabric price group 3	Euro	142,00
	Fabric price group 4	Euro	149,00
	Leather price group 1	Euro	141,00
	Leather price group 2	Euro	152,00
	Leather price group 3	Euro	164,00
	Leather price group 4	Euro	185,00
	Leather price group 5	Euro	212,00
	Leather price group 6	Euro	248,00
	Felt gliders	Euro	11,00



Say O Bench System

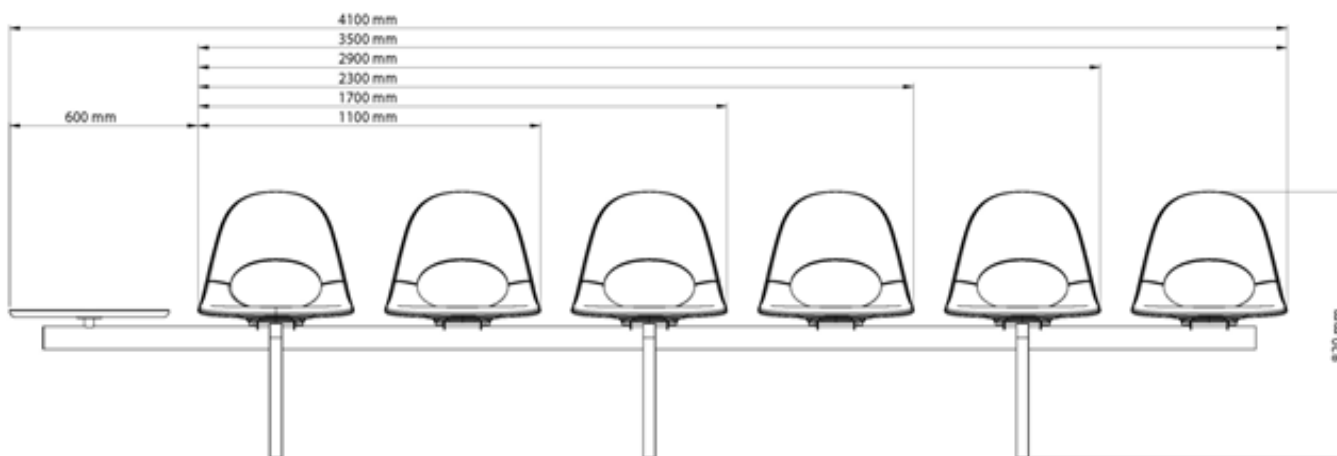
Type	Bench with or without seat pad upholstery, with or without arms and table plate
Variation	With or without seat pad upholstery, with or without arms and table plate, Can be mounted directly to the floor, into the wall or free standing.
Shell	3D Veneer shell. Made in standard: <ul style="list-style-type: none"> • Beech veneer, knife cut, black- or white stained • Ash veneer, knife cut, mat natural lacquered • Ash veneer, knife cut, black- or white painted • Oak veneer, knife cut, mat natural lacquered. • Walnut veneer, knife cut, mat natural lacquered • Other finiture, minimum 50 chairs PP recycle friendly poly shell in 9 colors - see colors at page 30
Frame	Metal frame. Made in standard: <ul style="list-style-type: none"> • Chrome • Black structure lacquer, NCS S 9000 S • White structure lacquer, NCS S 0500 S • Other finiture, minimum 50 chairs
Upholstery	Seat pad upholstery in formed plywood, cold foam, replaceable.

Price example: 3 persons bench. Please contact us for other solutions.

Model in beech veneer, mat natural lacquered shell, frame in chrome, black or white lacquer	Euro 3.344,00
Model in beech veneer, black or white stained shell, frame in chrome, black or white lacquer	Euro 3.740,00
Model in ash veneer, mat n natural lacquered shell, frame in chrome, black or white lacquer	Euro 3.800,00
Model in ash veneer, black or white painted shell, frame in chrome, black or white lacquer	Euro 3.905,00
Model in oak, mat natural lacquered shell, s frame in chrome, black or white lacquer	Euro 3.800,00
Model in walnut, mat natural lacquered shell, frame in chrome, black or white lacquer	Euro 3.850,00

Poly shell:	
Model in recycle friendly poly (PP+40%GF) - please see the color sheme at page 30	Euro 2.950,00

Extra:	Seat pad upholstery	
	Client fabric, 40 cm. per seat	Euro 85,00
	Fabric price group 1	Euro 105,00
	Fabric price group 2	Euro 115,00
	Fabric price group 3	Euro 135,00
	Fabric price group 4	Euro 142,00
	Leather price group 1	Euro 133,00
	Leather price group 2	Euro 145,00
	Leather price group 3	Euro 158,00
	Leather price group 4	Euro 178,00
	Leather price group 5	Euro 205,00
	Leather price group 6	Euro 242,00
	Arms, price for each	Euro 130,00
	Tableplate instead of chair shell	Euro 60,00



Fabric, leather and materials

Client fabric	With fabric with pattern, please order minimum 10 % more fabric, depending on the fabric.	
Gabriel	Atlantic Step Step Melange Fame Fame Hybrid Felicity Crisp (Say O standard collection - see color scale in this pricelist) Comfort Savak Strib	fabric pricegroup 1 fabric pricegroup 1 fabric pricegroup 1 fabric pricegroup 1 fabric pricegroup 2 fabric pricegroup 1 fabric pricegroup 2 fabric pricegroup 4 fabric pricegroup 4
Kvadrat	Divina 3 Divina Melange Hallingdal Remix Steelcut Trio Tonus Coda	fabric pricegroup 4 fabric pricegroup 4 fabric pricegroup 3 fabric pricegroup 2 fabric pricegroup 3 fabric pricegroup 2 fabric pricegroup 4
Sørensen Læder	Savannah (semi anilin leather - see samples in this pricelist) Royal Nubuc (anilin leather - see samples in this pricelist) Vegetal Rustick (anilin leather)	leather pricegroup 4 leather pricegroup 5 leather pricegroup 6
Camo Leathers	Sierra (corrigeret leather - see samples in this pricelist) Sydney (corrigeret semi anilin leather - see samples in this pricelist) Andorra (semi anilin leather - see samples in this pricelist) Tundra (anilin leather - see samples in this pricelist) Alabama(anilin leather - see samples in this pricelist)	leather pricegroup 1 leather pricegroup 2 leather pricegroup 3 leather pricegroup 2 leather pricegroup 3

For other fabrics and leather, please ask.

Fabric, leather and materials

Say O standard fabric, Gabriel Crisp



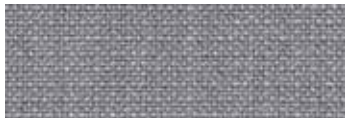
4033



4031



4711



4021



4032



4430



4022



4115



4302



4011



4701



4301



4013



4123



4731



4712



4034



4431



4702



4604

Please be aware the fabric colors is only for guiding

Fabric, leather and materials

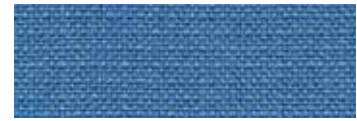
Say O standard fabric, Gabriel Crisp



4432



4721



4601



4411



4722



4122



4125



4741



4201



4117



4605



4203



4751



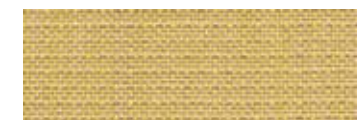
4211



4602



4752



4771



4723



4761



4603

Please be aware the fabric colors is only for guiding

say
O

Fabric, leather and materials

Say O standard fabric, Gabriel Crisp Specifications

Design no.	2424	
Application	contract soft seating	
Composition	93% New Zealand wool / 7% polyamide	
Weight	g/lm oz/lin.yd	460 14.84
Width	cm inches	140 55
Abrasion	rubs martindale (EN ISO 12947-2) rubs martindale (ASTM D4966-02) (heavy duty upholstery)	200,000 200,000
Pilling	scale 1-5, max. 5 - EN ISO 12945-2	4-5
Light fastness	scale 1-8, max. 8 - EN ISO 105-B02	5-7
Rubbing fastness	scale 1-5, max. 5 - EN ISO 105x12 (wet/dry)	4-5/4-5
Maintenance	dry cleaning P(S)	
US ACT	<ul style="list-style-type: none"> ● <u>AATCC 16 Light fastness</u> pass ★ <u>ASTM D4970 Pilling</u> pass ■ <u>ASTM D4966 Martindale (heavy duty)</u> pass ☼ <u>CA TB 117-2013</u> pass ☼ <u>AATCC 8 or 116 Wet/dry crocking</u> pass 	
Flammability	<u>BS 5852 Part 1 0,1 Cigarette & match</u> <u>BS EN 1021 1&2 Cigarette and Match</u> <u>Class Uno UNI 9175 Class 1 I EMME</u> <u>CA TB 117-2013</u> <u>IMO MSC 307(88) Annex 1 part 8</u> <u>MED Certificate IMO</u> <u>ÖNORM B 3825-B2-3800-Q1 UK</u> Will also pass other flammability standards. Flame retardant performance is dependent upon the foam used. Contains no flame retardant chemicals.	
Flammability with flameretardant treatment	<u>BS 5852 Crib 5 (flame retardant)</u> <u>BS 7176 Medium hazard (flame retardant)</u>	

Fabric, leather and materials

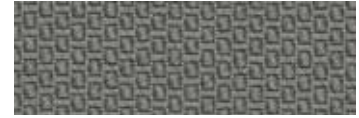
Say O standard fabric, Gabriel Felicity



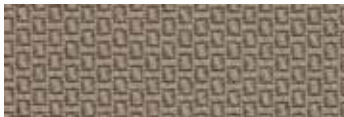
60105



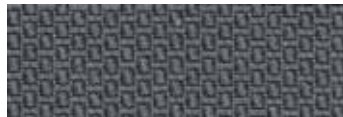
61163



60106



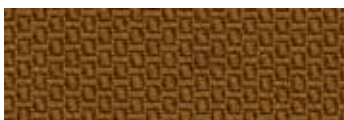
61164



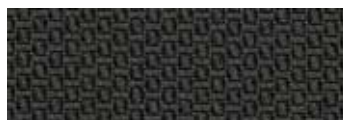
60107



61165



61167



60108



61166



60999



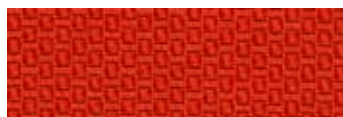
63087



64189



65102



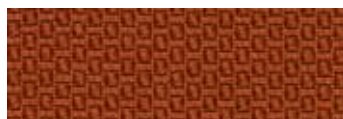
63088



64190



65103



63089



64191



66163



66164

Please be aware the fabric colors is only for guiding

Fabric, leather and materials

Say O standard fabric, Gabriel Felicity



66162



67080



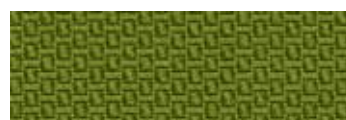
68178



66161



67082



68179



67079



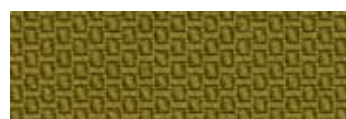
67081



62080



67083















62081

Please be aware the fabric colors is only for guiding

Fabric, leather and materials

Say O standard fabric, Gabriel Felicity Specifications

Design no.	13-2477	
Application	= contract	
Composition	100% post-consumer recycled polyester	
Weight	g/m	430
	oz/lin.yd	13.87
Width	cm	140
	inches	55
Abrasion	rubs martindale (EN ISO 12947-2)	90,000
	double rubs wyzenbeek (ASTM D4157-07) (heavy duty upholstery)	100,000
Pilling	scale 1-5, max. 5 - EN ISO 12945-2	5
Light fastness	scale 1-8, max. 8 - EN ISO 105-B02	5-7
Rubbing fastness	scale 1-5, max. 5 - EN ISO 105x12 (wet/dry)	4-5/4-5
	<p>wash or dry cleaning P(W) Felicity is made of polyester which is a material suited for environments with special requirements for cleaning. click here for guidance relating to disinfection.</p> <p> 40°C shrinkage max. 1,5%.</p> <p> 60°C shrinkage max. 2,5%.</p>	
Maintenance	<p> pass</p> <p> pass</p> <p> pass</p> <p> pass</p> <p> pass</p>	
US ACT	<p> pass</p> <p> pass</p> <p> pass</p> <p> pass</p> <p> pass</p>	
Acoustic test air flow resistance	EN 29053 & ISO 9053-1 (airflow resistance)	
Flammability	<p><u>BS EN 1021 1&2 Cigarette and Match</u> <u>CA TB 117-2013</u> Will also pass other flammability standards. Flame retardant performance is dependent upon the foam used. Contains no flame retardant chemicals.</p>	
Certificates	Expand list Complete list	
Abrasion resistance	<u>BS EN ISO 12947-2/14465</u>	
Breaking Force	<u>ASTM D2514 Breaking force</u>	
Colour fastness to rubbing	<u>BS EN ISO 105-X12</u>	
Pilling	<u>BS EN ISO 12945-2</u>	
Seam slippage	<u>BS EN ISO 13936-2</u> <u>ASTM D4164 Yarn slippage at a seam seam</u>	
Environment	<p>STANDARD 100 by OEKO-TEX® EU Ecolabel Cradle to Cradle Certified™ Bronze</p>	
Design	Mette Krebs Petersen	
Colours	Mette Krebs Petersen	

Fabric, leather and materials

Say O leather: Sørensens Leather, Savanne, Semi Anilin Leather



Nature 30323



Black 30314



Burgundy 30317



Coffee 30330



Cognac 30302



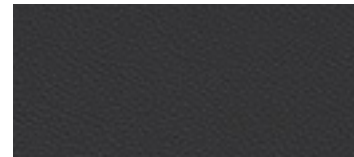
Red 30310



Walnut 30322



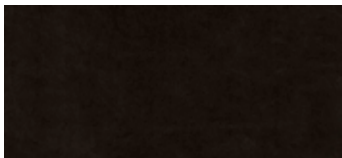
Green 30306



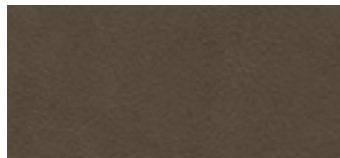
Anthrazite 30313

Please ask for other colors.

Sørensens Leather, Royal Nubuck, Anilin Leather



Black 30259



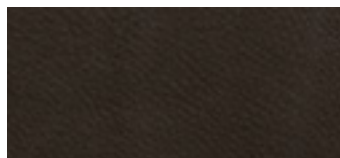
Almond 30256



Cognac 30260



Ecru 30253



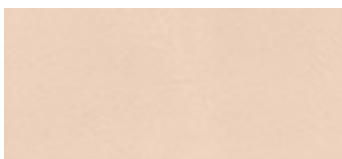
Stone 30255



Havanna 30258

Please ask for other colors.

Sørensens Leather, Vegetal Rustick, Anilin Leather



Nature 20090

Please be aware the leather colors is only for guiding

Fabric, leather and materials

Say O leather: Specification Savanne

Size:	5.0 – 6.0 m ²		
Thickness:	1.0 – 1.2 mm		
		Requirements	Our test
Colour fastness to light:	DIN EN ISO 105-B02	≥4	>6
Colour fastness to rubbing*:	DIN EN ISO 11640		
	Dry 500 rubs	≥4	4
	Wet 250 rubs	≥3-4	4-5
	Perspiration 80 rubs	≥3-4	4
Finish adhesion:	DIN EN ISO 11644	≥2N	4N
Tearing load	DIN EN ISO 3377-1	≥20N	41,4N
Flexing endurance:	DIN EN ISO 5402-1	50,000	no damage
Cigarette + match:	BS EN 1021-1 and 2		non-ignition
Flammability test:	CA TB 117 - 2013		non-ignition

*Reflecting test results on the leather surface

Colour fastness to light: The colour of the leather will become lighter over time. The light fastness index suggests how soon this will take place and is measured on a scale from 1 to 8 (1 = lowest and 8 = highest)

Colour fastness to rubbing is measured on a scale from 1 to 5 (1 = lowest and 5 = highest)

Technical specifications on the shade card are guidelines only. The information may change due to changes in production. Check our website for the most up-to-date technical details at www.sorensenleather.com

PCP: According to EU Council Directive 76/769/EEC

AZO dyes: According to EU Council Directive 76/769/EEC

Chrome VI: Our leather does not contain chrome VI

REACH: According to European Community Regulation on chemicals and their safe use (EC 1907/2006)

Specification Royal Nubuck

Size:	5.0 – 5.5 m ²		
Thickness:	1.4 – 1.6 mm		
		Requirements	Our test
Colour fastness to light:	DIN EN ISO 105-B02	≥3	3-4
Colour fastness to rubbing*:	DIN EN ISO 11640		
	Dry 50 rubs	≥3	3-4
	Wet 20 rubs	≥3	3
	Perspiration 20 rubs	≥3	3
Tearing load:	BS EN ISO 3377-1	>20N	96N
Cigarette + match:	BS EN 1021-1 and 2		non-ignition

*Reflecting test results on the leather surface

Colour fastness to light: The colour of the leather will become lighter over time. The light fastness index suggests how soon this will take place and is measured on a scale from 1 to 8 (1 = lowest and 8 = highest)

Colour fastness to rubbing is measured on a scale from 1 to 5 (1 = lowest and 5 = highest)

Technical specifications on the shade card are guidelines only. The information may change due to changes in production. Check our website for the most up-to-date technical details at www.sorensenleather.com

PCP: According to EU Council Directive 76/769/EEC

AZO dyes: According to EU Council Directive 76/769/EEC

Chrome VI: Our leather does not contain chrome VI

REACH: According to European Community Regulation on chemicals and their safe use (EC 1907/2006)

Specification Vegetal Rustic

Size:	5.0 – 6.0 m ²		
Thickness:	1.2 – 1.4 mm		
		Requirements	Our test
Colour fastness to light Δ:	DIN EN ISO 105-B02	Δ	Δ
Colour fastness to rubbing Δ:	DIN EN ISO 11640	Δ	Δ
Cigarette + match:	BS EN ISO 1021-1 and 2		non-ignition

Δ Vegetal is not measurable due to the natural colour of the leather (applies to both fastness to light and to rubbing)

Technical specifications on the shade card are guidelines only. The information may change due to changes in production. Check our website for the most up-to-date technical details at www.sorensenleather.com

PCP: According to EU Council Directive 76/769/EEC

AZO dyes: According to EU Council Directive 76/769/EEC

Chrome VI: Our leather does not contain chrome VI

REACH: According to European Community Regulation on chemicals and their safe use (EC 1907/2006)

Fabric, leather and materials

Say O leather: Camo Leathers, Sierra, Corrigeret leather



SI 1001 Black



SI 1058 Ocean Blue



SI 0441 Army



SI 1014 Red



SIK 1025 Antique Red



SI 1013 Pearl



SI 1007 Grey



SIK 1103 Brandy



SIK 1003 Cognac

Please ask for other colors.

Camo Leathers, Sydney, Let Corrigeret Semi Anilin Leather



SY 0100 Black



SY 0540 Royal Blue



SY 5454 Green



SY 4010 Anthracite



SY 6622 Dark Red



SY 0111 White



SY 4049 Slam



SY 5478 Cognac



SYK 0703 Brandy

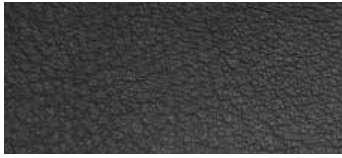
Please ask for other colors.

Please be aware the leather colors is for guiding

Fabric, leather and materials

Say O læder:

Camo Leathers, Andorra, Semi Anilin Leather



AD 76100 Black



AD 76060 Dark Blue



AD 76052 Antracit



AD 76064 Red



AD 76022 Brandy



AD 76014 Cream

Please ask for other colors.

Camo Leathers, Tundra, Anilin Leather



TUN 0060 Dark Blue



TUN 0128 Army



TUN 0250 Cognac



TUN 0273 Mocca



TUN 0277 Anthracite



TUN 0329 Dark Brown



TUN 0528 Fawn

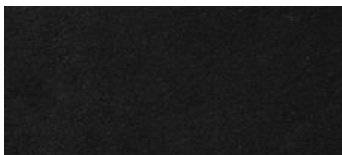


TUN 0691 Stone



TUN 0855 Grey

Camo Leathers, Alabama, Anilin Leather



ALB 0700 Black



ALB 1105 Grey



ALB 2112 Brown



ALB 5285 Marine



ALB 8407 Nature

Please be aware the leather colors is for guiding

Fabric, leather and materials

Say O leather: Specification Sierra

Gennemsnitsstørrelse: 4,2m²

Tykkelse: 0,9-1,1mm

Råvarer: Øversøiske råhuder

Garvning: Kromgarvet

	Metode	Testresultat
Lysægthed	DIN EN ISO 105-B02	≥7
Gnid ægthed – tør, farveændringer, 500 gnidninger	DIN EN ISO 11640	5
Gnid ægthed – tør, afsmitning, 500 gnidninger	DIN EN ISO 11640	5
Gnid ægthed – våd, farveændringer, 250 gnidninger	DIN EN ISO 11640	5
Gnid ægthed – våd, afsmitning, 250 gnidninger	DIN EN ISO 11640	3
Gnid ægthed – sved, farveændringer, 80 gnidninger	DIN EN ISO 11640/41	5
Gnid ægthed – sved, afsmitning, 80 gnidninger	DIN EN ISO 11640/41	3
Overfladeægthed	DIN EN ISO 11644	4,7 N/10mm
Bøjningsholdbarhed	DIN EN ISO 5402	50.000

Brandtest:

Artiklen opfylder følgende krav:

UNI EN ISO 1021-1/2

BS5852 1990 Sec. 4 NI/0-1,

California T.B.117

Specification Sydney

Gennemsnitsstørrelse: 4,5m²

Tykkelse: 0,9-1,1mm

Råvarer: Australske og nordamerikanske råhuder

Garvning: Kromgarvet

	Metode	Testresultat
Lysægthed	DIN EN ISO 105-B02	≥7
Gnid ægthed – tør, farveændringer – 500 gnidninger	DIN EN ISO 11640	5
Gnid ægthed – tør, afsmitning – 500 gnidninger	DIN EN ISO 11640	5
Gnid ægthed – våd, farveændringer – 250 gnidninger	DIN EN ISO 11640	4-5
Gnid ægthed – våd, afsmitning – 250 gnidninger	DIN EN ISO 11640	3-4
Gnid ægthed – sved, farveændringer – 80 gnidninger	DIN EN ISO 11640	4-5
Gnid ægthed – sved, afsmitning – 80 gnidninger	DIN EN ISO 11640	4
Overfladeægthed	DIN EN ISO 11644	7,3 N/10 mm
Bøjningsholdbarhed	DIN EN ISO 5402	≥200.000

Brandtest:

Artiklen opfylder følgende krav:

UNI EN ISO 1021-1/2

BS5852 1990 Sec. 4 NI/0-1,

California T.B.117

Alt CAMO læder er gennemfarvet og produceret uden brug af PCP og CFC.

Intet af vores læder indeholder krom VI.

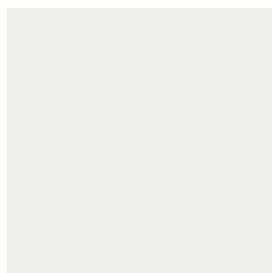
Alle artiklerne overholder normerne for REACH erklæringen.

Fabric, leather and materials

Say O Standard recycle friendly plastic (PP+40%GF):



Color NCS S 9000-N



Color NCS S 0500-N



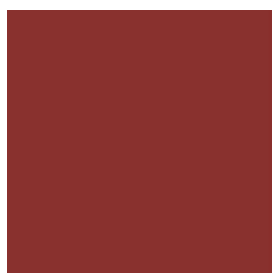
Color NCS S 6020-R90B



Color NCS S 6010-G10Y



Color NCS S 4502-Y



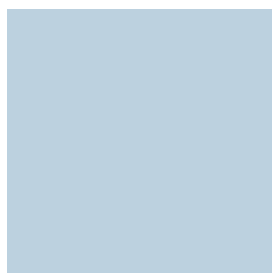
Color NCS S 4050-Y90R



Color NCS S 1502-Y50R



Color NCS S 3060-Y10R



Color NCS S 1015-R90B

Please be aware the plastic colors is for guiding

Fabric, leather and materials

Say O Standard wood veneer:



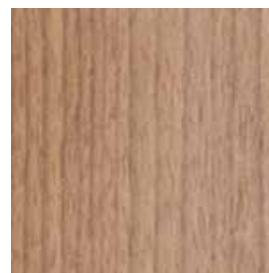
Beech natural



Ash natural



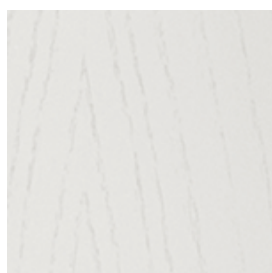
Oak natural



Walnut natural



Beech stained white



Ash painted white



Beech stained black



Ash painted charcoal



Ash painted black

Other colors and surfaces, minimum 50 pieces

Please be aware the wooden colors is for guiding

say
O

www.sayo.dk